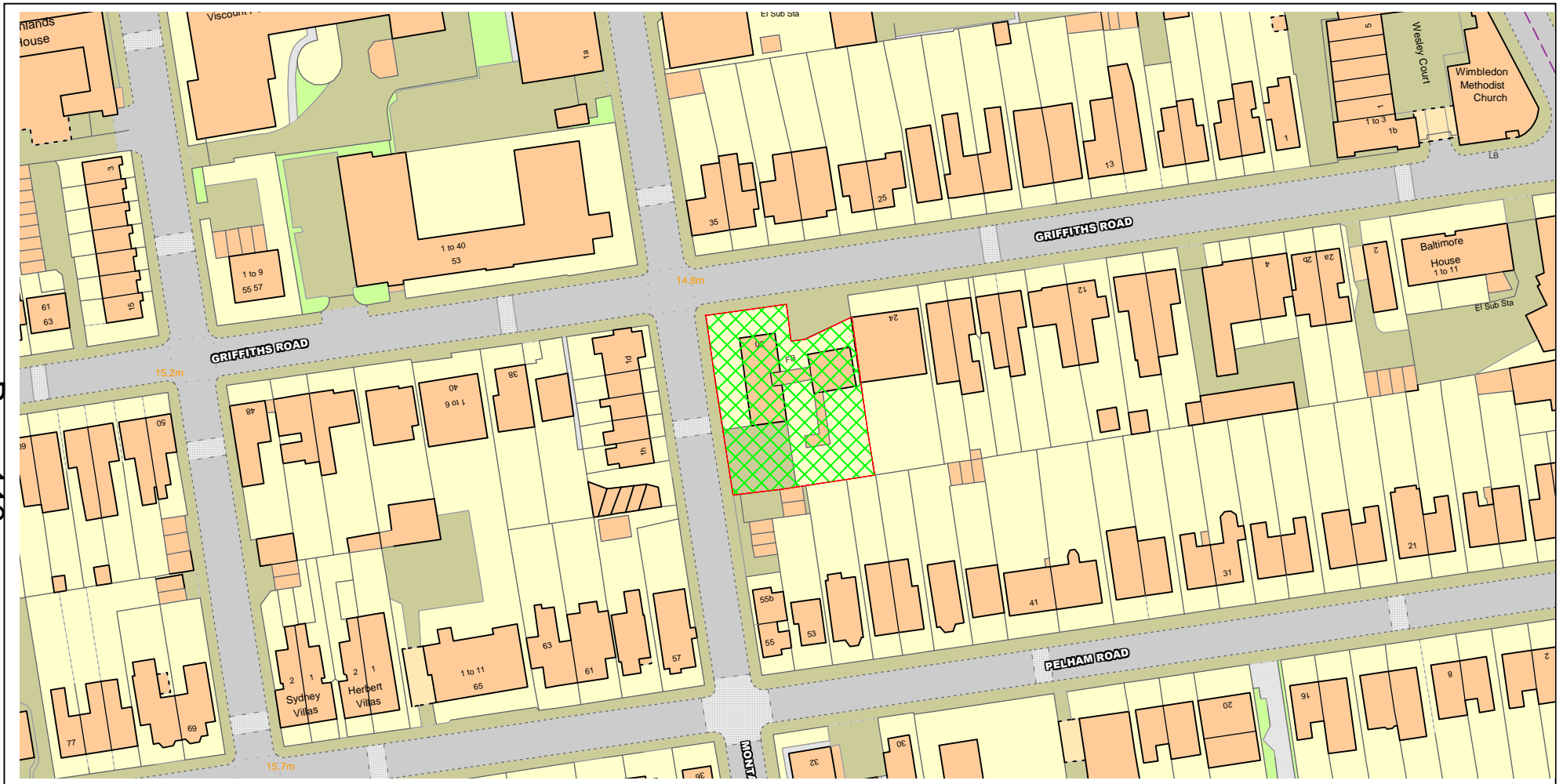


# NORTHGATE SE GIS Print Template



Text Details 30 Griffiths Road

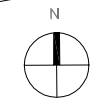
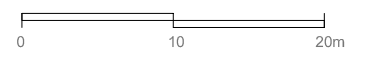


Page 114

Offices

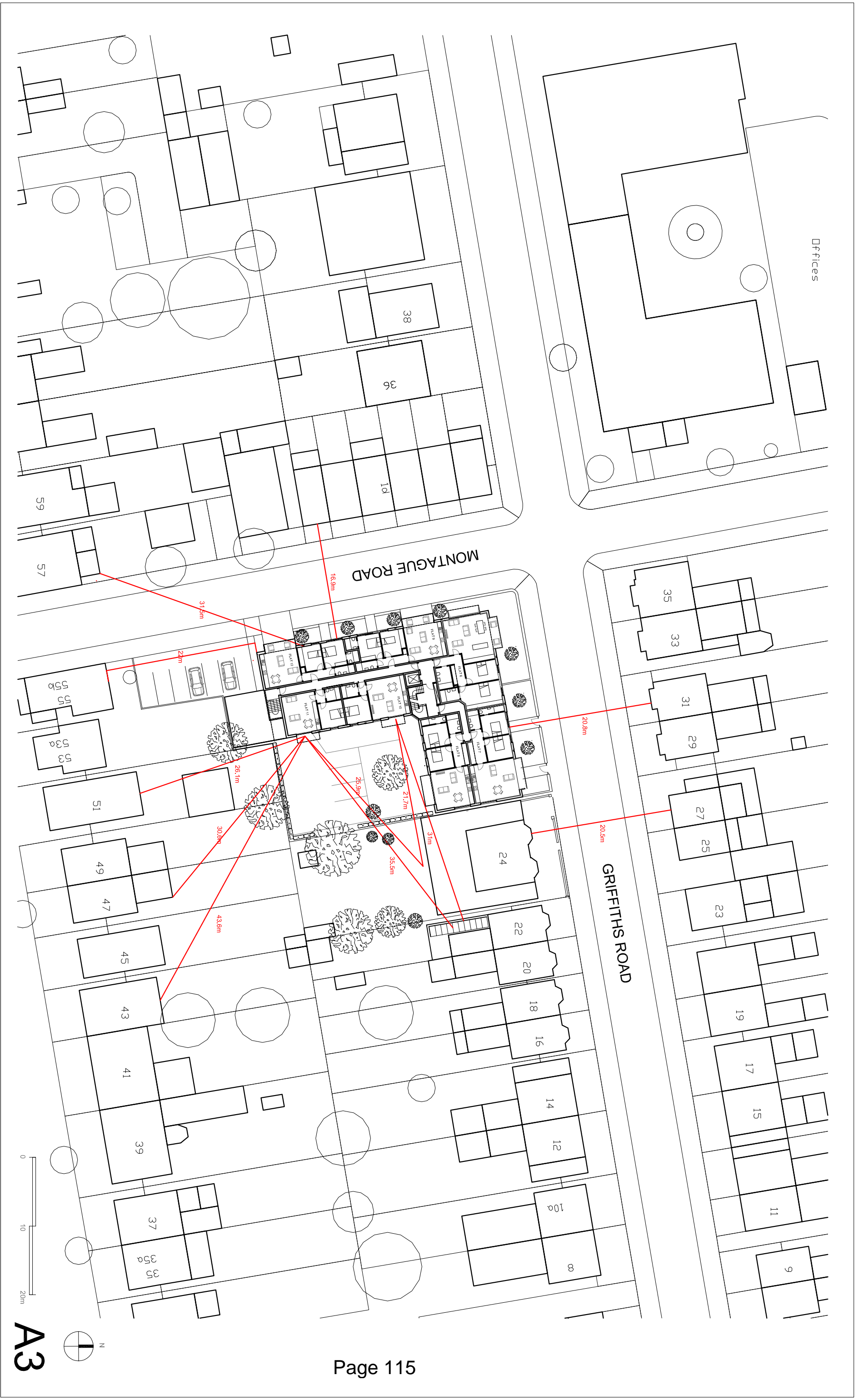
GRIFFITHS ROAD

MONTAGUE ROAD



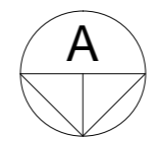
A3

© 3W Architecture Limited. All rights reserved.	Rev	Date	Amendment	Date	Project	Job Ref.	Job no.	<b>3W</b> <sup>TM</sup>
	A	12.11.2015	Planning application Issue	May 2015	30 Griffiths Road SW19	GWR	185	
3W Architecture Limited registered in England.	B	07.01.2016	Officer comments incorporated. Landscaping amended - Planning application Issue	Scale @ A3 1:500	Checked	Title Proposed Site Plan		Rev. B
Company no. 3132871 Registered Office The Pines Boars Head East Sussex				Status Planning	Dwg. no. 185 (05) 006			
				Architect <b>3W</b> Thames Wharf Studios Rainville Road London W6 9HA tel. 020 7835 5552 fax. 020 7835 5525 email. mail@3w.org				

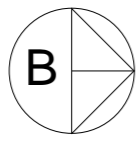


A3

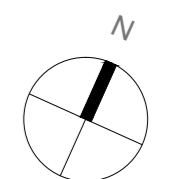
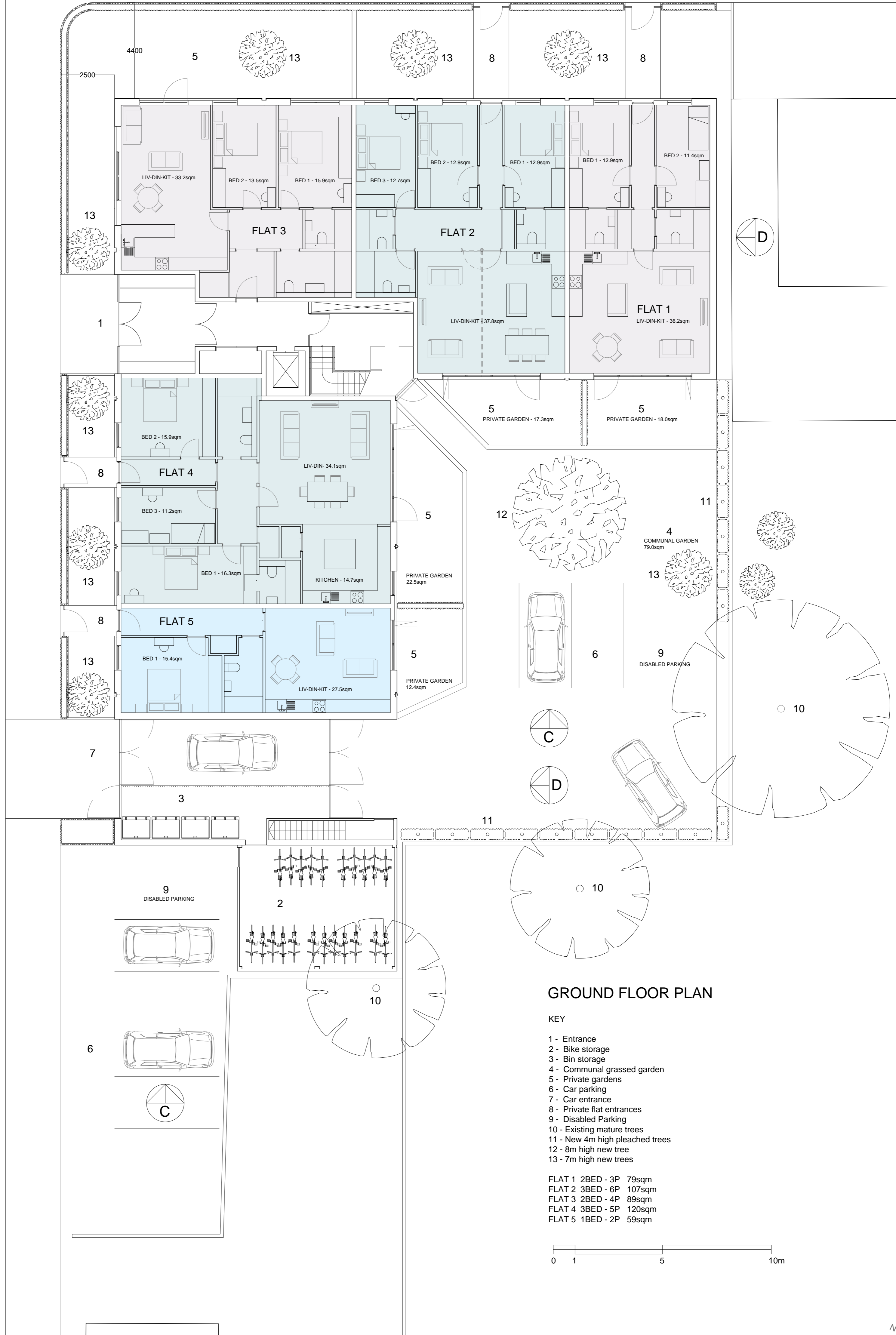
Rev	Date	Amendment	Date	Project	Job Ref.	Job no.
A	18.12.2015	Planning application Issue	May 2015	30 Griffiths Road SW19	GWR	185
B	06.01.2016	Officer comments incorporated, Landscaping amended - Planning application Issue	Scale @ A3 1:500	Checked	Title Proposed Site Plan at First Floor	
			Status Planning	Dwg. no. 185 (05) 007	Rev. B	
© 3W Architecture Limited. All rights reserved.			Architect			
3W Architecture Limited registered in England.			3W Thames Wharf Studios Rainville Road London W6 9HA tel. 020 7835 5552 fax. 020 7835 5525 email mail@3w.org			
Company no. 3132871 Registered Office The Pines Boars Head East Sussex			3W			



GRIFFITHS ROAD

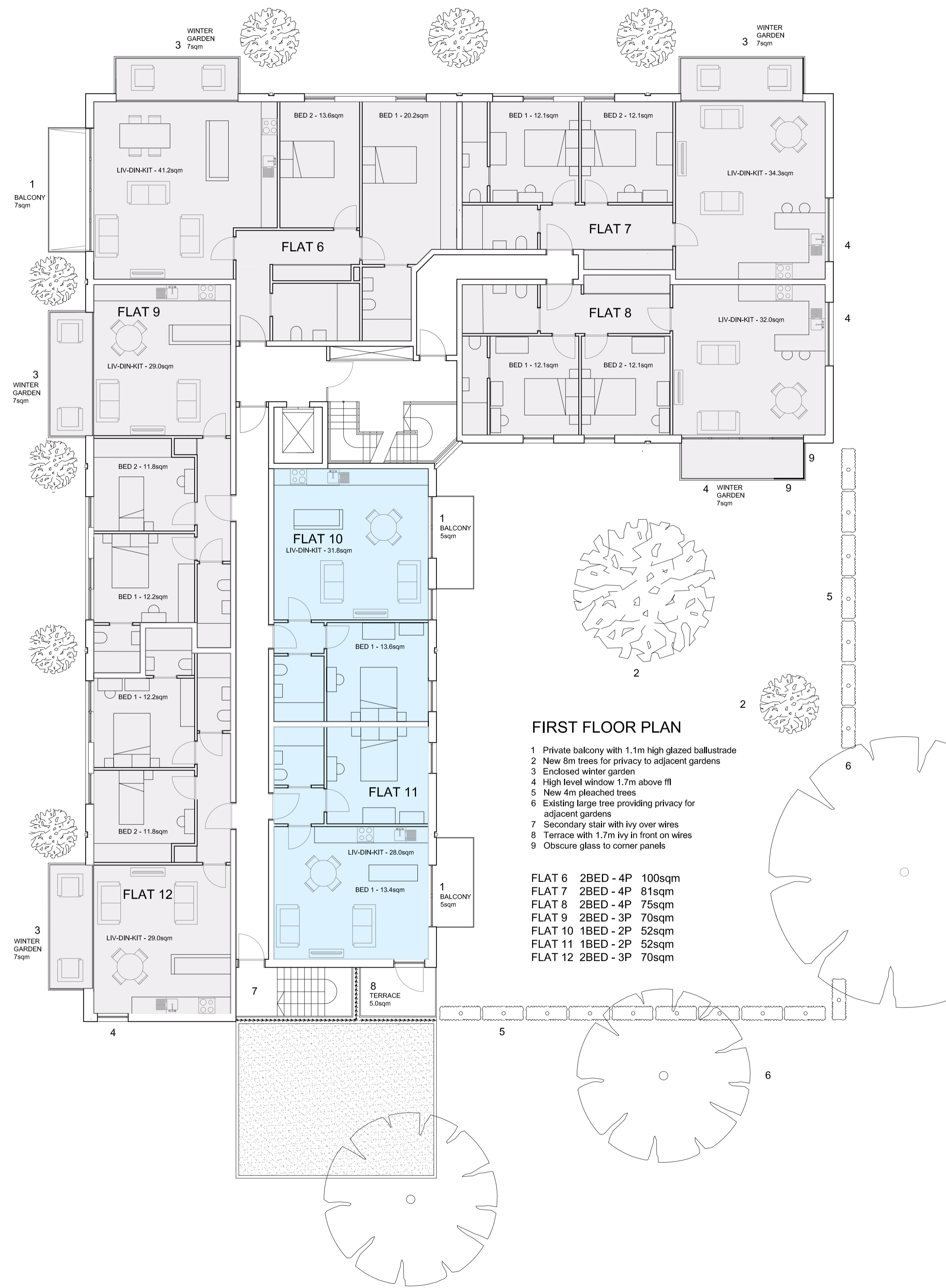


MONTAGUE ROAD



A1

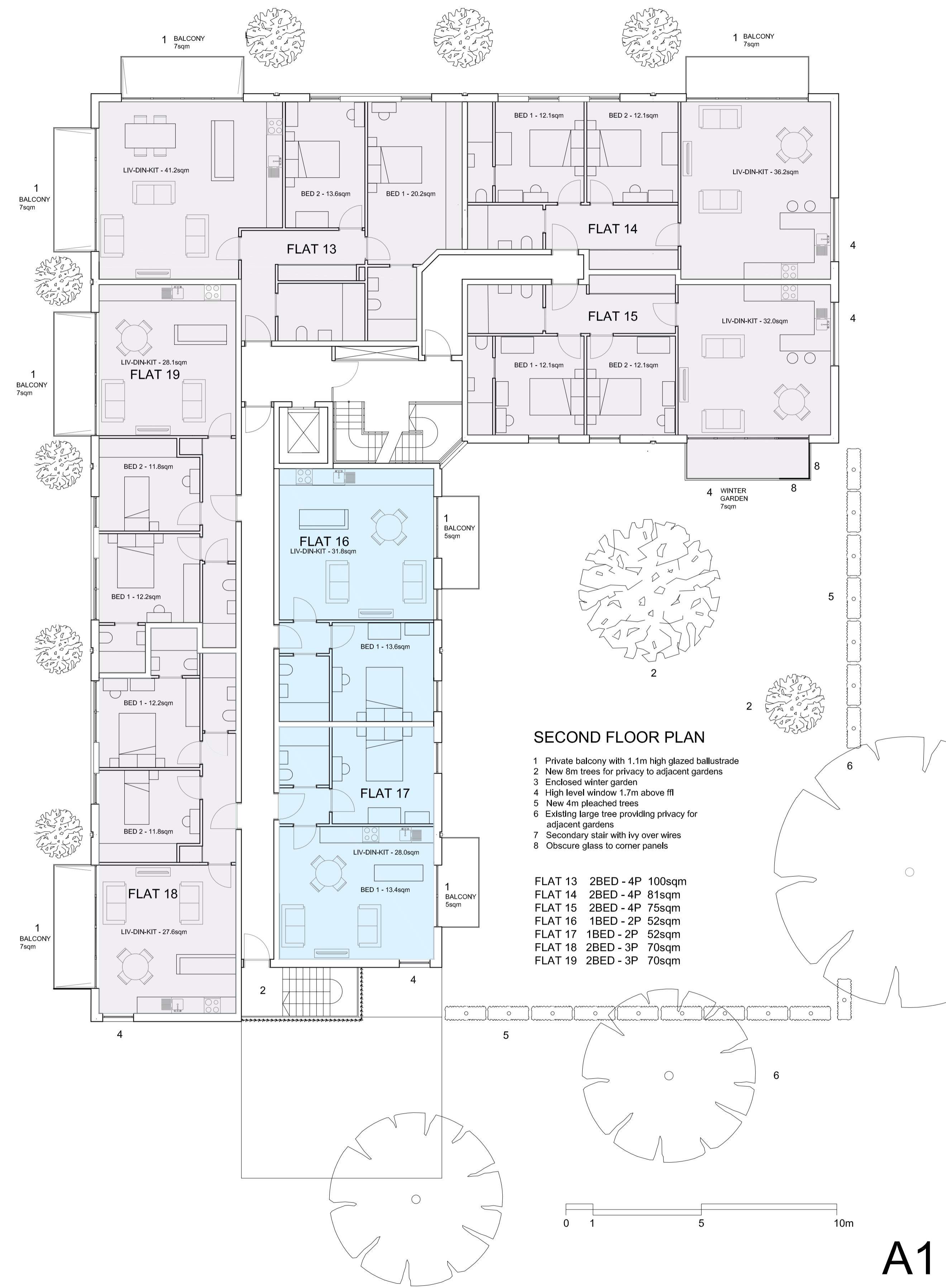
© 3W Architecture Limited. All rights reserved.  3W Architecture Limited registered in England.  Company no. 3132871 Registered Office The Pines Boars Head East Sussex	Rev	Date	Amendment	Date	May 2015	Project	Griffiths Road SW19	Job Ref.	GRW	Job no.	158	
	A	12.11.2015	Issued for Planning application	Scale @ A1	1:100	Checked	Title	Ground Floor Plan		Rev.	E	
	B	17.11.2015	Issued for Planning application	Status	Planning	Dwg. no.	185(10)005		Architect	3W Thames Wharf Studios Rainville Road London W6 9HA tel. 020 7835 5552 fax. 020 7835 5525 email. mail@3w.org		
	C	18.12.2015	Habitable rooms and garden sizes added and adjusted - Issued for Planning application									
	D	06.01.2016	Landscaping amended to mitigate overlooking - Issued for Planning application									
E	12.01.2016	Design and Planning Officer comments incorporated - Issued for Planning application										



**FIRST FLOOR PLAN**

- 1 Private balcony with 1.1m high glazed balustrade
- 2 New 8m trees for privacy to adjacent gardens
- 3 Enclosed winter garden
- 4 High level window 1.7m above ffl
- 5 New 4m pleached trees
- 6 Existing large tree providing privacy for adjacent gardens
- 7 Secondary stair with ivy over wires
- 8 Terrace with 1.7m ivy in front on wires
- 9 Obscure glass to corner panels

FLAT 6	2BED - 4P	100sqm
FLAT 7	2BED - 4P	81sqm
FLAT 8	2BED - 4P	75sqm
FLAT 9	2BED - 3P	70sqm
FLAT 10	1BED - 2P	52sqm
FLAT 11	1BED - 2P	52sqm
FLAT 12	2BED - 3P	70sqm

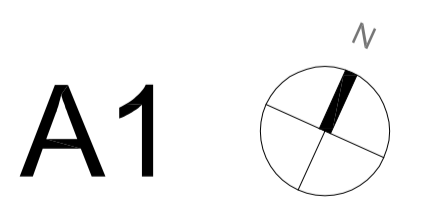
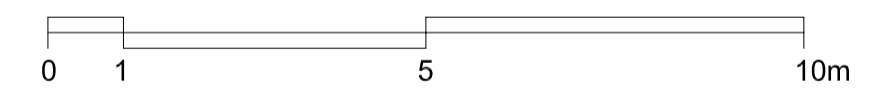
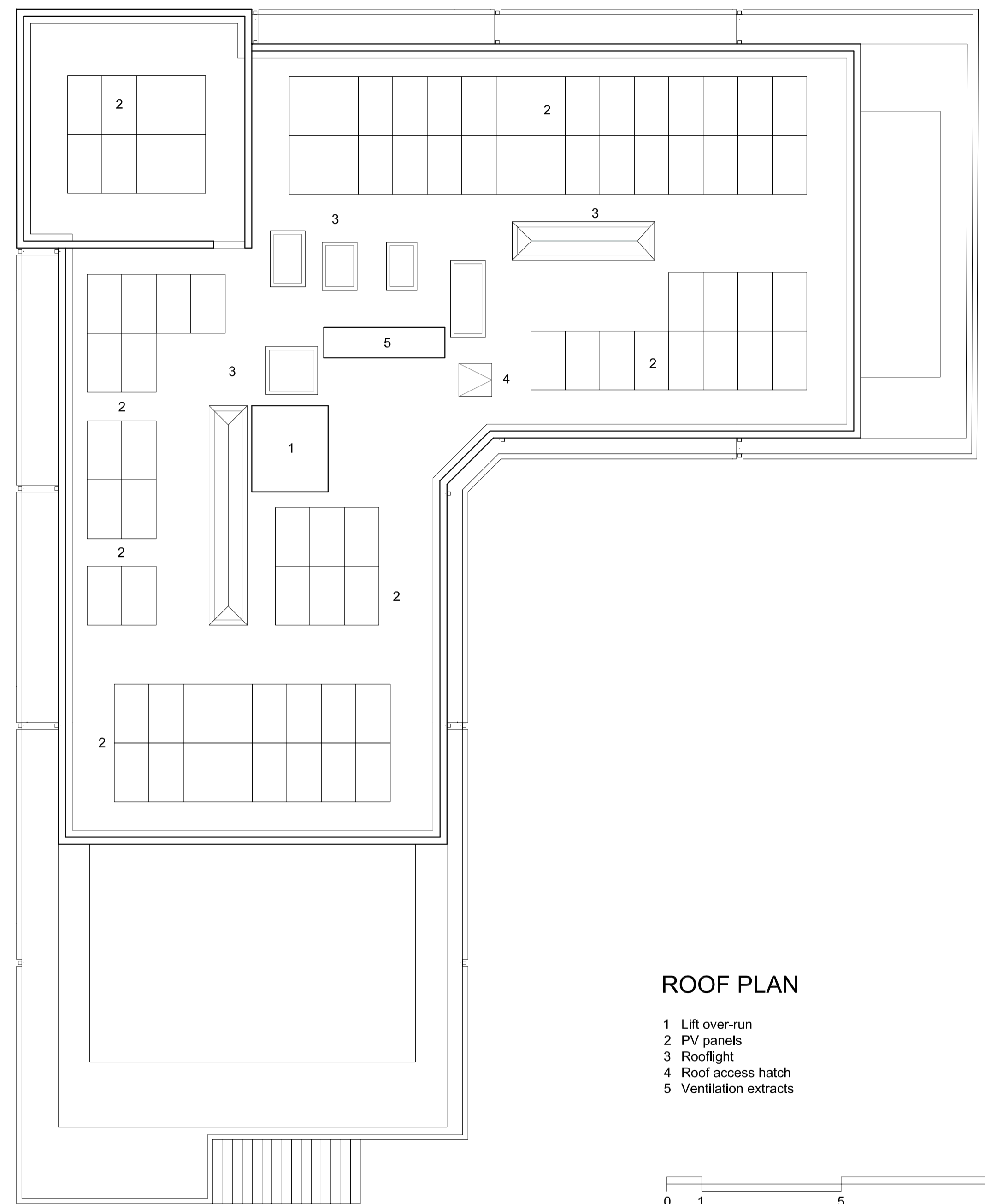
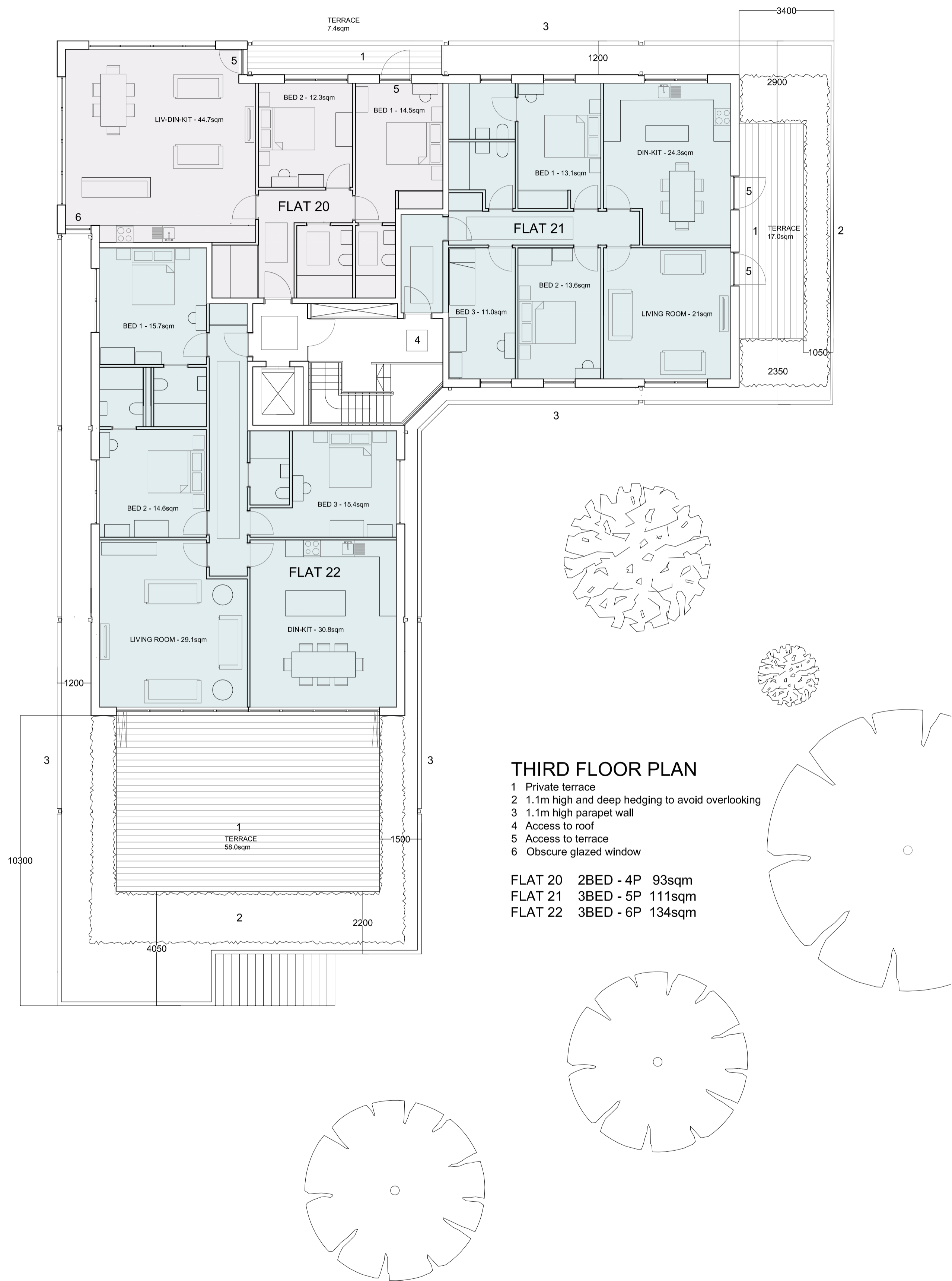


**SECOND FLOOR PLAN**

- 1 Private balcony with 1.1m high glazed balustrade
- 2 New 8m trees for privacy to adjacent gardens
- 3 Enclosed winter garden
- 4 High level window 1.7m above ffl
- 5 New 4m pleached trees
- 6 Existing large tree providing privacy for adjacent gardens
- 7 Secondary stair with ivy over wires
- 8 Obscure glass to corner panels

FLAT 13	2BED - 4P	100sqm
FLAT 14	2BED - 4P	81sqm
FLAT 15	2BED - 4P	75sqm
FLAT 16	1BED - 2P	52sqm
FLAT 17	1BED - 2P	52sqm
FLAT 18	2BED - 3P	70sqm
FLAT 19	2BED - 3P	70sqm

© 3W Architecture Limited. All rights reserved. 3W Architecture Limited registered in England. Company no. 3132871 Registered Office The Pines Boars Head East Sussex	Rev	Date	Amendment	Date	May 2015	Project	Griffiths Road SW19	Job Ref.	GRW	Job no.	158			
	A	12.11.2015	Issued for Planning application	Scale @ A1	Checked	Title	First and Second Floor Plans	Status	Planning	Dwg. no.	185(10)006		Rev.	D
	B	18.12.2015	Habitable rooms sizes added and adjusted - Issued for Planning application	Architect	3W	Thames Wharf Studios	Rainville Road	London	W6 9HA	tel. 020 7835 5552	fax. 020 7835 5525		email. mail@3w.org	
	C	06.01.2016	Southern end plan form reduced, Flat 8 & 15 bay window omitted - Issued for Planning application											
D	12.01.2016	Design and Planning Officer comments incorporated - Issued for Planning application												



Rev	Date	Amendment	Date	Project	Job Ref.	Job no.
A	12.11.2015	Issued for Planning application	May 2015	Griffiths Road SW19	GRW	158
B	18.12.2015	Habitable rooms sizes added and adjusted - Issued for Planning application	Scale @ A1	Title		
C	06.01.2016	Southern end set back a further 3.3m Eastern end set back a further 1.2m Street elevations set back 1.2m - Issued for Planning application	Checked	Third Floor and Roof Plans		
D	12.01.2016	Design and Planning Officer comments incorporated - Issued for Planning application	Status	Dwg. no.		Rev.
			Planning	185(10)007		D
© 3W Architecture Limited. All rights reserved.			Architect			
3W Architecture Limited registered in England.			3W Thames Wharf Studios Rainville Road London W6 9HA tel. 020 7835 5552 fax. 020 7835 5525 email. mail@3w.org			
Company no. 3132871 Registered Office The Pines Boars Head East Sussex			3W™			